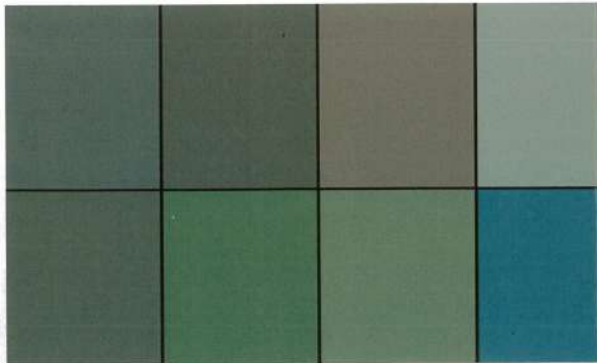


Emerald thrives naturally in one gentle verdant spring after a long drought finally is quenched, vigorous and so alive. Architecture integrated with Emerald thus flourishes for nature and what is man-made combine within, and a soul is bestowed that resonates with our psyche, since Emerald gives us a chance to ponder the relationship between architecture and nature, and how important life and environment are. With Emerald, exuberant spring emerges. "Buildings are deeply emotive structures which form our psyche."

INVITAC
Module Model



LINEAR PERFORMANCE WARRANTY



Glass	Heat Strengthened Glass
Junction Box	IP68 Rated
Output Cables	TUV List 2mm ² Customized Length
Maximum System Voltage	1500 VDC (IEC)
Spectrum Series Fuse Rating	30 A
Power Tolerance	0~±3 %
Temperature Coefficients of Pmax	-0.35 %/°C
Temperature Coefficients of Voc	-0.29 %/°C
Temperature Coefficients of Isc	0.048 %/°C
Nominal Operating Cell Temperature (NOCT)	45±2 °C
GMV	80-85 %



Thickened Double-Layer Tempered Glass



High Impact Resistance



50% Increased High Mechanical Performance Modules



Optimized Soundproofing Insulation

Higher Aesthetics

Inherent advantages of integration in module design, better appearance without metal wire exposition.

Higher Power Efficiency

Higher-density cell arrangement can put more cells per unit area and achieve higher module efficiency, meet the requirements for energy-saving buildings.

Building Integrated Higher Safety

Double layers of tempered glass to meet the requirements of building safety: with fireproofing, better wind load, heat resistance and frost resistance. Be used as building unit for integrated installation.

